

RP-240 Non-Insulated Steel



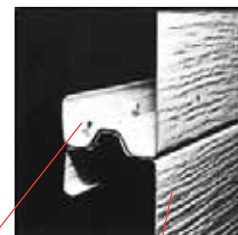
RESIDENTIAL



RP-240 features attractive woodgrain and a raised panel design to complement the beauty of your home.

Corrosion and rust resistant hot dipped galvanized steel to give you the finest quality and a long lasting smooth operating garage door. Sections include tongue and groove meeting rails for superior strength and better sealing against wind, rain, and snow. A rigid aluminum retainer also provides added strength while securing replaceable U-shaped bottom weatherstrip. In addition, the 1.0 mil paint system includes .25 mil rust inhibiting primer and .75 mil exterior top coat that resists fading and chalking while providing consistent color from panel to panel.

- Raised Panel Design
- Woodgrain Texture
- Window Lites Available



Rolled
formed tongue
and groove
meeting rails

Non-insulated
panels with
woodgrain
texture



Custom Garage Door Options

Due to our exclusive welded construction, ArmRLite's aluminum overhead sectional doors are capable of the highest degree of customization. Many of the options listed below are exclusive to ArmRLite due to our superior construction method.

STANDARD FINISH OPTIONS



WHITE



BROWN

DESIGN TRIM AND GLASS LITES



COLONIAL



SUNBURST



CATHEDRAL



PLAIN