

Security

COMMERCIAL

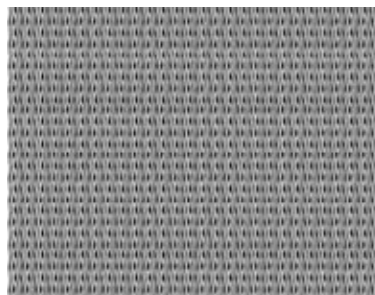


Security features an exclusively welded aluminum frame with options to meet your security needs.



CHAIN LINK

- Upward acting
- Available to meet a large array of air space requirements for different applications
- Offers the highest visibility in security conscious environments



MESH SCREEN

- Upward acting
- Available to meet Federal Specifications STD A-A-1037B for security doors and food applications
- Effective for addressing bug and vermin infestations as well as curb theft

SUGGESTED APPLICATIONS

- Food and product warehouses
- Food production facilities
- Agricultural storage locations
- Health and medicinal products warehouses
- Cosmetics and chemical storage
- Paper mills
- Distribution centers
- Parking garages
- Correction facility sally ports
- Laboratories and research facilities
- Infestation prone facilities by either bugs or vermin
- Structures requiring added security features or theft deterrents.



SPECIFICATIONS

WIDTH	Maximum width up to 30'-2"
MATERIAL	Extruded 6063-T6 Alloy
FRAME THICKNESS	1 ³ / ₄ "
TOP RAIL	4 ¹ / ₂ " , 7 ¹ / ₂ "
BOTTOM RAIL	4 ¹ / ₂ " , 7 ¹ / ₂ " - tapered or sloping
MEETING RAILS	3 ⁷ / ₈ " wide per pair
END STILES	3 ³ / ₈ " , 4 ¹ / ₂ " , 7 ¹ / ₂ " wide
CENTER STILES	3 ³ / ₈ " wide

All dimensions include beading.

FABRICATION	By concealed heli-arc welding - 20 YEAR WELDED ALUMINUM FRAME WARRANTY - except for top sections when trolley operated.
FINISH	Anodized per Aluminum association number A-21 - custom finishes available. 20 year warranty on clear anodized finish, dark bronze and Duranars®. 1 year warranty on powder coats.
PANELS	Chain link, wire mesh, or security screen panels to meet project code and air space requirements.
GLASS	Impact and safety glazing is available - consult factory.
ASTRAGAL	Vinyl astragal is standard on all door bottoms.
TRACK	ArmRTite 2" x .083 galvanized steel or 3" x .109 galvanized as indicated, Horizontal tracks curved on a 15", 20" or 32" radius, high lift, vertical lift. Vertical tracks bracket or angle mounted.
SPRINGS	Torsion springs on a continuous ball bearing cross header shaft are standard. Hollow shaft is standard. Solid shaft available.
HARDWARE	Hinges are 13' gauge tubular type galvanized steel with roller carrier incorporated in hinge. End hinges and the center hinges are secured with specially "designed" 1/4" self tapping screws. Rollers are heavy duty cadmium plated steel ball bearing rollers with hardened inner and outer race. ALL SECTIONS ARE DRILLED FOR HINGES.
LOCKING	End stile lock, inside locking only is standard. Other arrangements available. All locks to be field drilled.

CUSTOM OPTIONS

Pedestrian Pass Door within overhead door (with and without step over)

Outside hood cover for exterior mounted doors

Sloping bottom rails

High-lift, standard, and vertical lift track options available. Consult factory regarding low-headroom applications.

Matching entrance doors and gates

High cycle springs